

ON STAGE

FLUID FOUNDATION

CHARACTERISTICS:

On Stage is a silky touch foundation with high blendability for a comfortable and uniform film on the skin. As a daily liquid foundation, it provides protection to the skin from the everyday stress agents thanks to its antioxidant active ingredients and plant origin oils. Ideal for all skin types, it grants a healthy glow.



QUALITIES & BENEFITS:

- Squalane restores the lipid structure of the skin by hydrating it at the same time.
- Vitamin E thanks to its antioxidant properties supports the natural process of cell renewal.
- Argan Oil softens and strengthens the skin. It is enriched with Vitamin E, linoleic acid and natural tocopherols with provide anti-aging properties.
- Alaria Esculenta Extract is a powerful antioxidant that also plays an important role in collagen synthesis. It enhances the synthesis of hyaluronic acid too and it has a revitalizing, firming, filler and replumping effect.
- Punica Granatum Fruit Extract has an astringent and toning effect. It fights free radicals responsible for skin aging.

HOW TO USE:

- Light coverage: Use your fingers to gently apply one layer of foundation and massage onto face.
- Medium coverage: Use the Foundation Brush #838 (sold separately) to elevate coverage and ensure an evenly-blended effect. Seamlessly diffuse the foundation by using sweeping motions as you blend outwards.

GOES WELL WITH:

All Lord&Berry face products

CUSTOMERS SHOULD KNOW:

Paraben Free

Not tested on animals

Allergen free

PRODUCT GROUP NUMBER: 8640

INGREDIENTS:

AQUA (WATER), CYCLOPENTASILOXANE, TALC, SQUALANE, CETYL PEG/PPG-10/1 DIMETHICONE, POLYGLYCERYL-4 ISOSTEARATE, PARAFFINUM LIQUIDUM (MINERAL OIL), ETHYLHEXYL METHOXYCINNAMATE, GLYCERIN, DISTEARDIMONIUM HECTORITE, SODIUM HYALURONATE, TOCOPHERYL ACETATE, ARGANIA SPINOSA KERNEL OIL, ALARIA ESCULENTA EXTRACT, PUNICA GRANATUM FRUIT EXTRACT, CAPRYLIC/CAPRIC TRIGLYCERIDE, ACRYLATES COPOLYMER, HYDROGEN DIMETHICONE, ALUMINUM HYDROXIDE, DISODIUM EDTA, SODIUM DEHYDROACETATE, PHENOXYETHANOL, TROPOLONE, PARFUM (FRAGRANCE). [+/- MAY CONTAIN: CI 77891 (TITANIUM DIOXIDE), CI 77491 (IRON OXIDES), CI 77492 (IRON OXIDES), CI 77499 (IRON OXIDES), CI 77742 (MANGANESE VIOLET), CI 77007 (ULTRAMARINES), CI 77510 (FERRIC AMMONIUM FERROCYANIDE), CI 42090 (BLUE1), CI 19140 (YELLOW 5), CI 15850 (RED 7), CI 15850 (RED 6)].

[> READ MORE ABOUT TITANIUM DIOXIDE AND ITS SUNSCREEN PROPERTIES](#)

ON STAGE

FLUID FOUNDATION



#8640 FAIR IVORY

> FAIR PINK SKIN TONE WITH COOL UNDERTONES



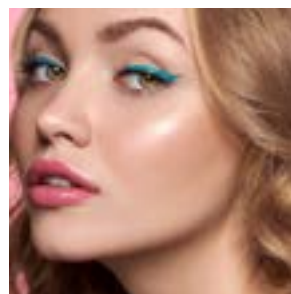
#8641 IVORY

> LIGHT BEIGE SKIN TONE WITH A BALANCE OF YELLOW AND PINK UNDERTONES



#8642 BEIGE NUDE

> BEIGE SKIN TONE WITH NEUTRAL UNDERTONES



#8643 ALMOND

> GOLDEN BEIGE SKIN TONE WITH A BALANCE OF YELLOW AND PINK UNDERTONES



#8644 WARM SAND

> COOL LIGHT BEIGE SKIN TONE WITH PEACHY YELLOW UNDERTONES



#8646 HONEY

> TANNED BEIGE SKIN TONE WITH WARM UNDERTONES

