

CHARACTERISTICS:

CREAM FOUNDATION is a long lasting emulsion with high coverage. It has a silky finish and it is formulated to allow an high blendability product. CREAM FOUNDATION is suitable for all skin types and contains antioxidants, moisturizers, UVA-UVB filters and anti-pollution extracts. This long lasting formula is available in a wide range of colors and contains emollients to help moisturize and condition the skin. Available in 50 ml bottle.



UNIQUE QUALITIES:

- Easy to apply, smooth uniform coverage
- Water-resistant
- Complete coverage
- High-tech coated pigments
- With active moisturizers and skin protection
- Flawless
- With Hyaluronic acid

BENEFITS:

- A shine controlling
- Hides imperfections and evens out skin tone
- The result is flawless and lasts for hours
- Antioxidant Vitamin E
- With Argan oil and Phytosqualano nutrient oil

HOW TO USE:

Apply a maximum of one or two layers to the whole face with the sponge. Apply a single, lighter layer around the eyes (too much will accentuate fine lines). For even application, avoid applying the foundation over rich, oil-based face creams.

CUSTOMERS SHOULD KNOW:

Nozzle may be sealed: punch nozzle with a pin to allow flow.

PRODUCT GROUP NUMBER: 8600

INGREDIENTS:

SHADES: 8619-24: AQUA (WATER), CYCLOPENTASILOXANE, TALC, SQUALANE, CETYL PEG/PPG-10/1 DIMETHICONE, GLYCERIN, PARAFINUM LIQUIDUM (MINERAL OIL), ETHYLHEXYL METHOXYCINNAMATE, POLYGLYCERYL-4 ISOSTEARATE, DISTEARDIMONIUM HECTORITE, PHENOXYETHANOL, PANTENOL, SODIUM DEHYDROACETATE, TOCOPHERYL ACETATE, METHICONE/DIMETHICONE COPOLYMER, DISODIUM EDTA, TROPOLONE, DIPEPTIDE DIAMINO BUTYROYL BENZYLAMIDE DIACETATE, SODIUM HYALURONATE, PARFUM (FRAGRANCE). [+/- MAY CONATIN: TITANIUM DIOXIDE (CI 77491), IRON OXIDE (CI 77491), IRON OXIDE (CI 77492), IRON OXIDE (CI 77499)]. **SHADES: 8610, 8629-31:** AQUA (WATER), CYCLOPENTASILOXANE, TALC, SQUALANE, CETYL PEG/PPG-10/1 DIMETHICONE, PARAFINUM LIQUIDUM (MINERAL OIL), ETHYLHEXYL METHOXYCINNAMATE, POLYGLYCERYL-4 ISOSTEARATE, GLYCERIN, DISTEARDIMONIUM HECTORITE, PHENOXYETHANOL, HYDROGEN DIMETHICONE, TOCOPHERYL ACETATE, SODIUM DEHYDROACETATE, ARGANIA SPINOSA (ARGAN) KERNEL OIL, SODIUM HYALURONATE, ACRYLATES COPOLYMER, DISODIUM EDTA, ALUMINIUM HYDROXIDE, TROPOLONE, PARFUM (FRAGRANCE). [+/- MAY CONATIN: TITANIUM DIOXIDE (CI 77491), IRON OXIDE (CI 77491), IRON OXIDE (CI 77492), IRON OXIDE (CI 77499)].

LORD & BERRY

CREAM FOUNDATION FLUID FOUNDATION



#8617 FAIR IVORY

> FOR FAIR PINK SKIN TONE WITH WARM UNDERTONES



#8620 IVORY

> FOR LIGHT BEIGE SKIN TONE WITH COOL UNDERTONES



#8618 BEIGE NUDE

> FOR FAIR BEIGE SKIN TONE WITH NEUTRAL UNDERTONES



#8619 ALMOND

> FOR FAIR TO LIGHT BEIGE SKIN TONE WITH WARM UNDERTONES



#8625 WARM SAND

> FOR LIGHT COOL BEIGE SKIN TONE WITH WARM UNDERTONES



#8626 CASHEW

> FOR COOL BEIGE MEDIUM LIGHT SKIN TONE WITH COOL UNDERTONES



#8627 CINNAMON

> FOR PINK MEDIUM LIGHT SKIN TONE WITH WARM UNDERTONES



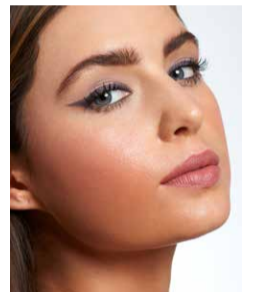
#8624 SAND

> FOR LIGHT TO MEDIUM OLIVE SKIN TONE WITH COOL UNDERTONES



#8628 SUEDE

> FOR MEDIUM TAN SKIN TONE WITH NEUTRAL UNDERTONES



#8621 HONEY

> FOR MEDIUM TAN SKIN TONE WITH WARM UNDERTONES



#8623 MACCHIATO

> FOR MEDIUM OLIVE SKIN TONE WITH WARM UNDERTONES



#8622 ESPRESSO

> FOR MEDIUM TANNED COOL SKIN TONE WITH NEUTRAL UNDERTONES



#8629 GINGER

> FOR MEDIUM TO DARK TOFFEE SKIN TONE WITH COOL UNDERTONES



#8630 CAMEL

> FOR DARK CARAMEL SKIN TONE WITH WARM UNDERTONES



#8631 COCOA

> FOR GOLD BROWN DARK SKIN TONE WITH NEUTRAL UNDERTONES



#8632 DEEP SPICE

> FOR DARK TO DEEP SKIN TONE WITH WARM/ORANGE UNDERTONES



#8633 MAHOGANY

> FOR DARK TO DEEP SKIN TONE WITH RED/YELLOW UNDERTONES



#8634 TRUFFLE

> FOR DEEP SKIN TONE WITH NEUTRAL UNDERTONES

